



# Express More Than a Thousand Words

problem

- What are **relations** between emojis?
- Can we identify emoji synonyms?
- Can we define the meaning of emoji?
- Can we **assign** emoji to text?

## METHOD

### 1 Data acquisition

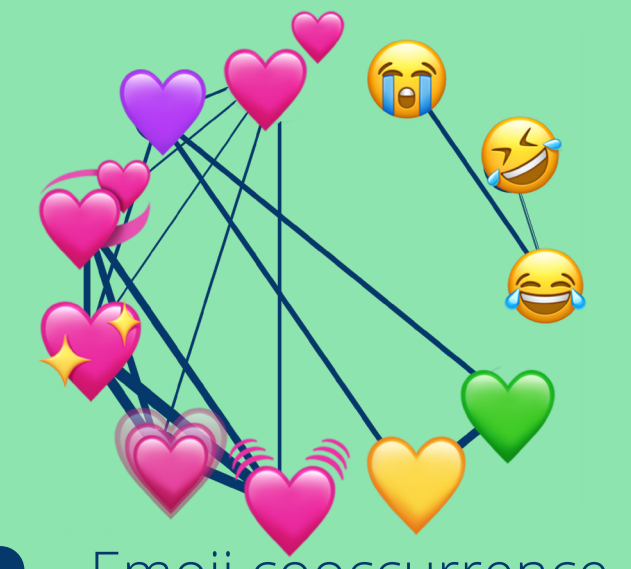


- Twitter scraping using twint
- 45 distinct emojis
- 0,5 + M tweets
- 8 months: 4-11/2019
- selected hours

### 2 Preprocessing

- tokenization
- cleaning: links, emails, mentions, dates, phones, ...
- separation: text + emoji

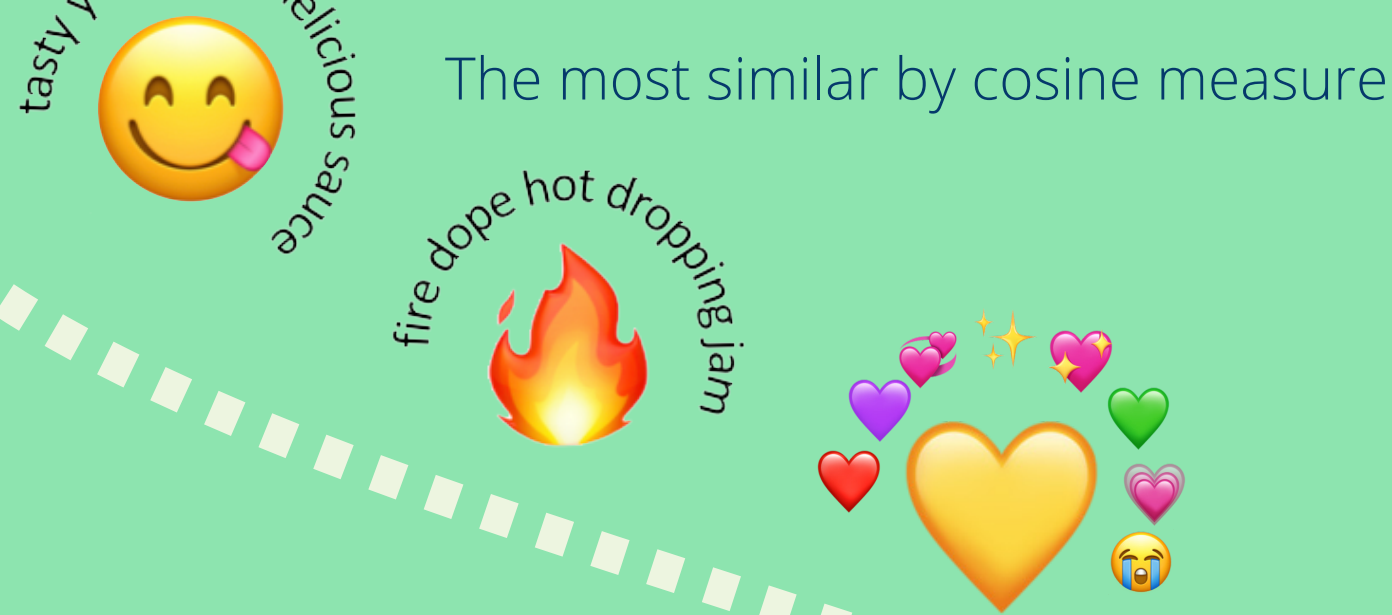
### 3 Analysis



Emoji cooccurrence with threshold=600

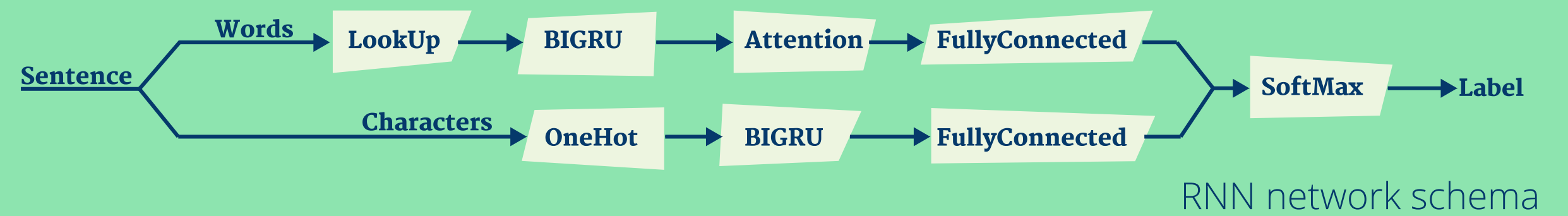
### 4 Embeddings

fastText 😊 → [124, 43, 53, ...]  
Hello → [561, 52, 22, ...]



The most similar by cosine measure

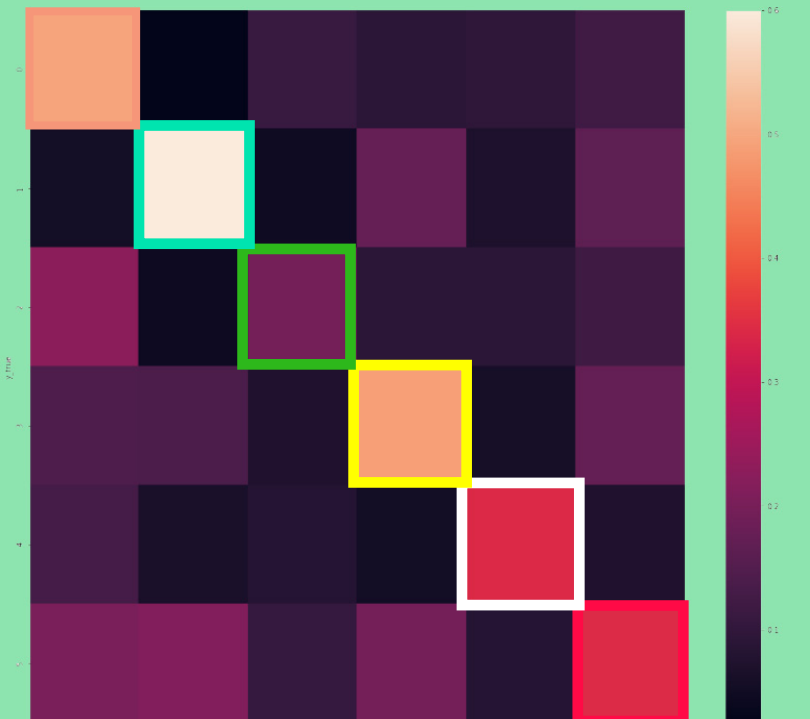
### 6 Classification



RNN network schema

#### Classification of emoji clusters:

- Results:
- accuracy: 44%
  - f-score: 42%
  - significantly better



The same groups as on 5

#### Discovery:

- More clusters generate more unbalanced dataset: ex. 29% vs 1.5% of data
- Some clusters are too general, diversified

#### Attention discovery:

##### Correct:

i know it is and i am about to burst into **tears** just watching it again 🥹  
 i **hope** i win your giveaway **wish** me luck 🙏  
**missing** our little bunny so much my heart hurts 💔

##### Incorrect:

where did yall come from never had this much likes **lmao** real talk tho  
 i had an **amazing** day  
 true: ❤️ predicted: 😂

##### Controversial:

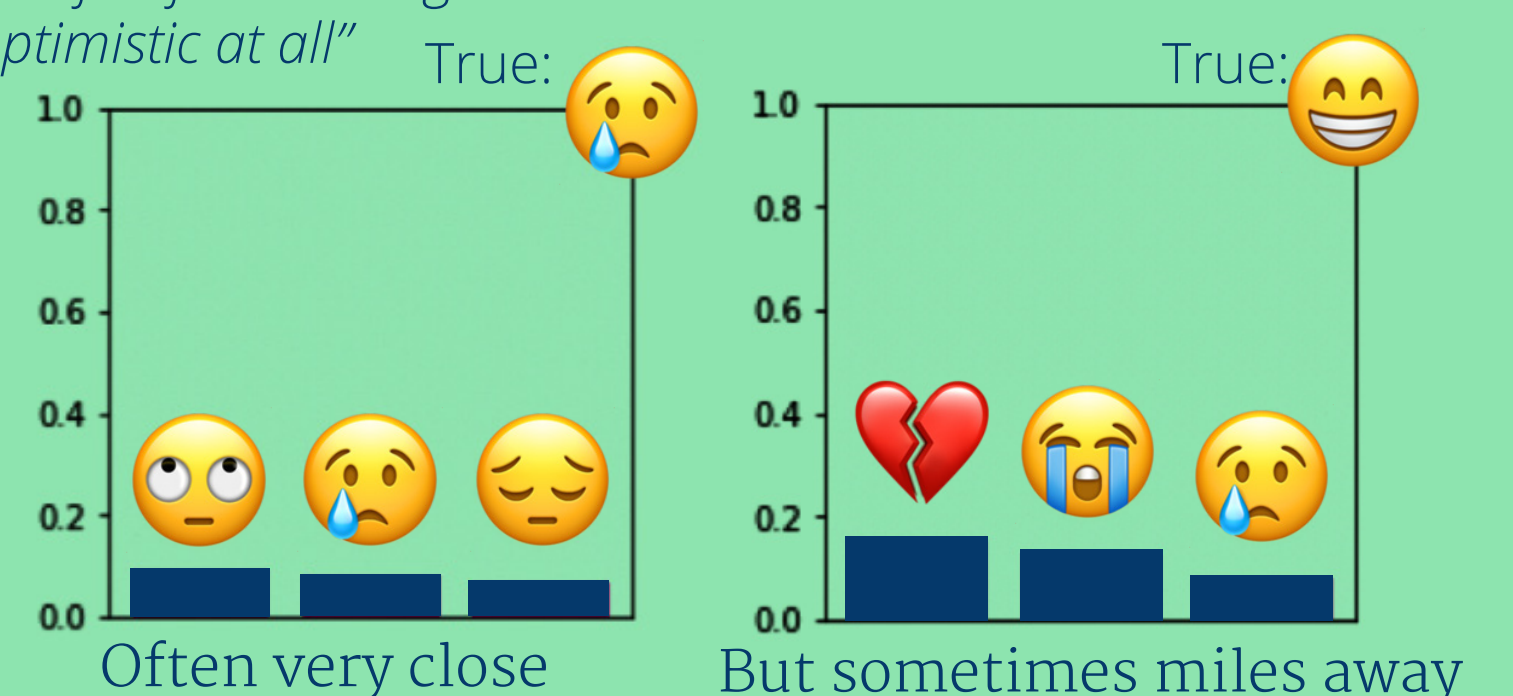
they shudve ask u to give them a lil gym **workout**  
 true: 😏 predicted: 🍊  
 be **strong** enough to walk away from what s hurting you and be patient  
 enough to wait for the  **blessings** you **deserve**  
 true: 😊 predicted: 🙏

#### Soft evaluation

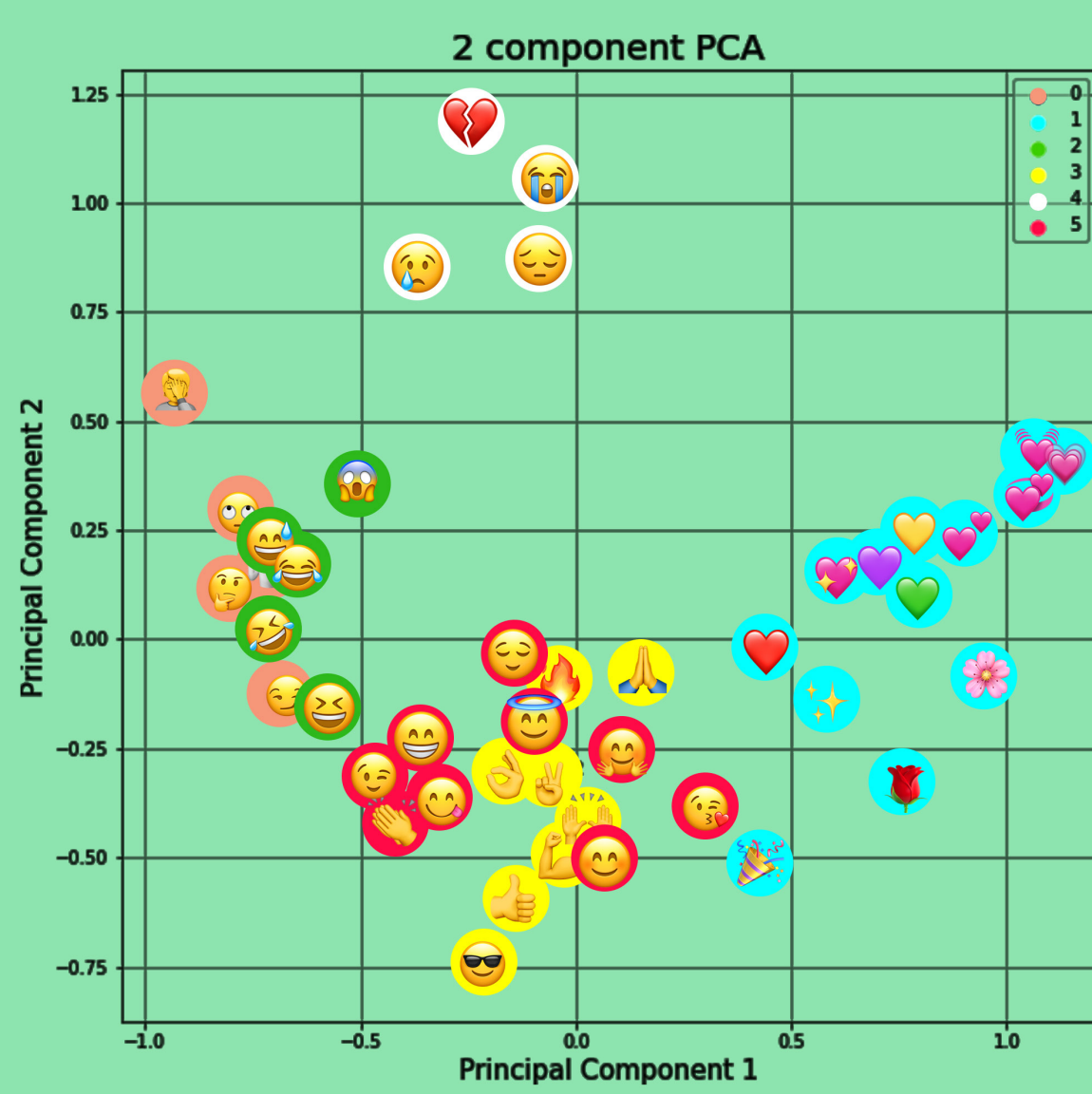
Is the right answer close or far away?

"homo sapiens is too aggressive and too fearful to change i am not optimistic at all"

"he did nothing to me so i can not hate"



### 5 Clustering



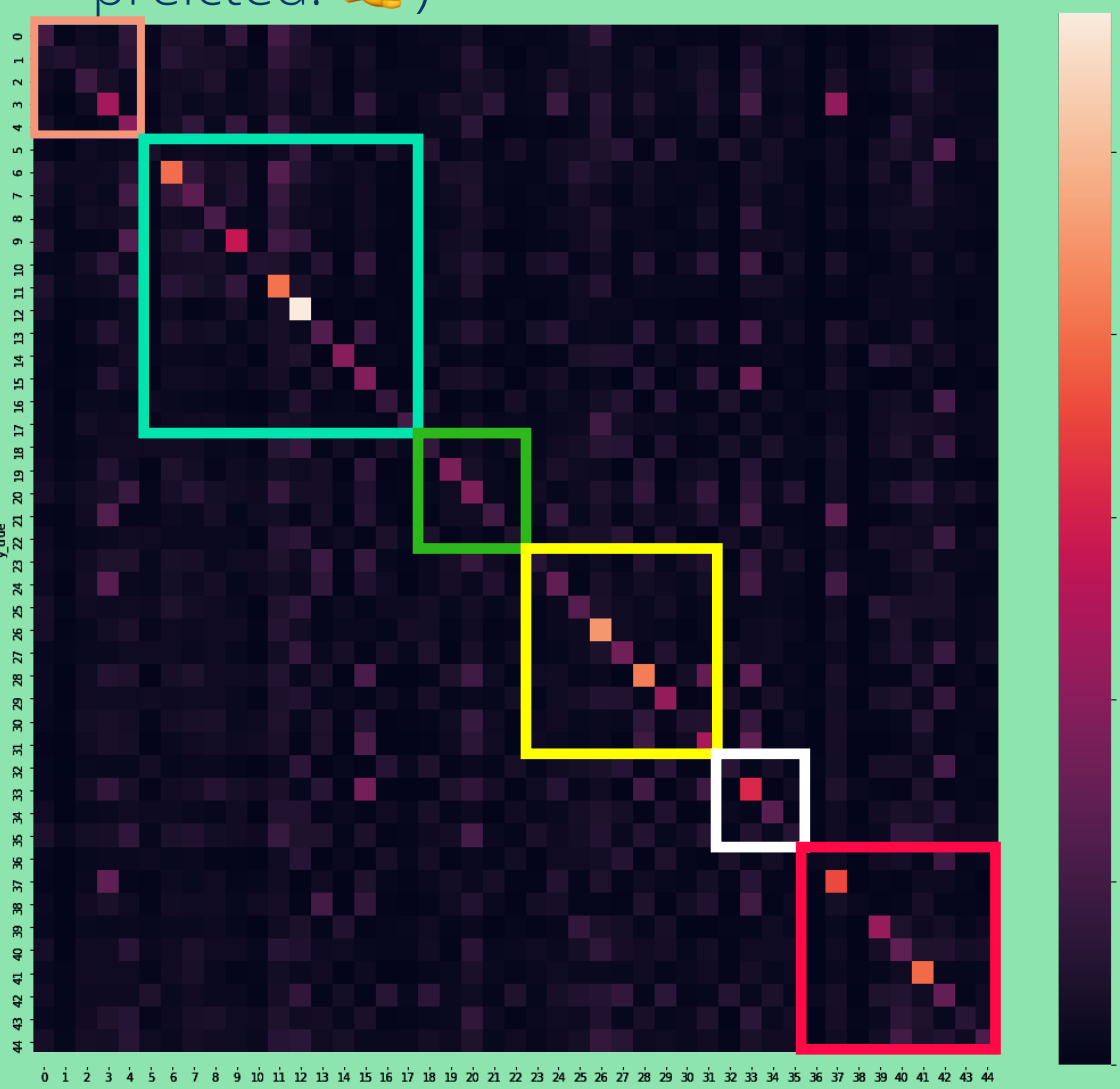
- KMeans: PCA for 6 clusters
  - 😂 together with 😏
  - 😏 together with 😊?
- DBScan:
  - only few groups
  - a lot of outliers
  - the strongest group is ❤️❤️❤️❤️❤️

#### Classification:

- Results:
- accuracy: 15%
  - f-score: 13%
  - min. f-score: 2% 🥹❤️
  - max f-score 33% 🥹❤️

#### Discovery:

- There are emojis that could be seen as synonymous like ❤️ and 🍷
- Some emojis are rarely assigned to sentences by model
- "Sounds perfect another very talented very fine great choice by" (true: 🥹 predicted: 🙏)



The same groups as on 5

## Takeaway message!

- Some emojis are used in very **wide** and some in **narrow context**
- Predicting emoji to text is difficult task because emojis are used in a subjective way. There is no objective way



#### Authors

- Miriam Jańczak
- Anna Makuś
- Gabriela Relikowska
- Adrianna Zielińska